



Technical Data Sheet

NM Golv 100 LE



Utg: 2015-05-13

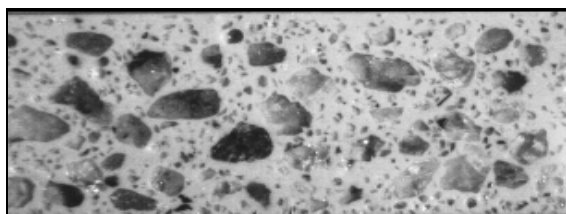
Ers: 2016-03-17

Rev: 2021-10-25

General Description

NM Golv 100 LE is a self-levelling, low TVOC, solvent free, coloured epoxy floor coating. **NM Golv 100 LE**, as cured, emits in principle nothing to the air and can be used where the demands are a low TVOC.

NM Golv 100 LE contains quartz sand in carefully selected sizes from 0 to 1 mm. The sand does not settle during cure. That gives excellent properties through the coating, both mechanically and thermally. **NM Golv 100 LE** has high impact resistance, a great wear resistance and can withstand most industrial chemicals for longer periods.



Section of a 3 mm layer of NM Golv 100 LE floor coating

Processing Instructions

NM Golv 100 LE is applied with a trowel or **NM Elite Applicator** in 3-5 mm layer. If air bubbles still to be found at 30-40 minutes after levelling, pass over a number of times with a spiked roller.

Surface Preparation

Concrete surfaces must be at least 14 days old. Remove oil, grease and wax contaminants by scrubbing with industrial grade detergent or degreasing agents followed by mechanical cleaning. Cement laitance, loose particles, mould release agents, curing membrane and other contaminants must be removed from the surface by shot-blasting, scarifying or grit-blasting followed by vacuum cleaning.

After pre-treatments, the surface tensile strength must be at least 1.5 MPa (check with an approved pull-off tester).


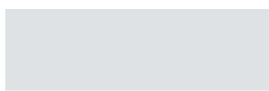






Application

Apply **NM Grundering BP 50 Super** or **NM Grundering 560** as primer. After that should the surface be levelled and all damages repaired. Then apply **NM Golv 100 LE** in the desired thickness.

The system can be done with non-slip finish or coloured flakes.

For a full description, see **NM Work Description NM Golv 100 LE**.

Standard colours

	
37 NCS S1040 B10G	17 NCS S3502 B
	
20 NCS S2050 Y20R	16 NCS S6030 G30Y
	
19 NCS S5040 Y80R	15 NCS S4030 G30Y
	
18 NCS S4502 B	14 NCS S3010 G90Y

The NCS-number is the closest to the NM colour index.

We can in addition to these standard colours offer a wide range of RAL and NCS colours. We can also produce colours based on customer's samples.

Chemical resistance

For a complete list, contact Nils Malmgren AB or visit our home site, www.nilsmalmgren.se

Key

- Not recommended
- + Short use
- ++ No problems

Petrol	+
Ethanol, 50 %	+
Motor oil	++
Sodium hydroxide, 10 %	++
Hydrochloric acid, 10 %	+
Water	++

NILS MALMGREN AB

P.O Box 2039
S-442 02 YTTERBY

Phone: +46 303-936 10

Quality certified since 1990

E-mail: info@nilsmalmgren.se
Home site: www.nilsmalmgren.se

Typical Properties

Resin NM Golv 100 LE + colour index
Hardener NM Härdare 100 LE

Mixing ratio

Resin – Hardener 100-12 by weight

Density: 1750 kg/m³

Dry content: 100%

Potlife 100g 20°C: 45 minutes

Compressive strength: 80 MPa

Tensile strength: 16 MPa

Flexural strength: 40 MPa

E-modulus: 6 GPa

Wear resistance: RWA1

Bond strength: B2.0

Impact resistance: IR25

Application and curing temperature: Min. +12°C (54°F)
Max. +35°C (95°F)

VOC: 1.6g/l

VOC-category: j

VOC limit: 550g/l

Consumption: 5.25 – 8.75 kg/m²

Normal packing: 22.4 kg

Chemical resistance: Good. See our home page for details.

Cleaning solvent: Acetone

Curing	12°C /54°F	20°C/68°F
Light pedestrians	24 h	14 h
Full traffic	4 days	2 days
Fully cured	14 days	7 days

Note

Quality assurance:

In order to assure the quality of application, we have a form where important information is documented. The form is available from Nils Malmgren AB, telephone +46 303 936 10

Declaration of performance:

Can be obtained for this product. See our website or contact Nils Malmgren AB.

Disclaimer

This product's technical specifications are developed by experience in field and laboratory by us.

Fully cured will take place at seven days at +23°C and 50 % RF.

We reserve the right to change products as well as data. Current data sheets are available at our website and with us. We cannot assume responsibility for use in areas that we do not know. The user shall always evaluate products for their intended use and we guarantee only the material properties. For every product we offer reference objects separately.

NILS MALMGREN AB

P.O Box 2039
S-442 02 YTTERBY

Phone: +46 303-936 10

Quality certified since 1990

E-mail: info@nilsmalmgren.se
Home site: www.nilsmalmgren.se